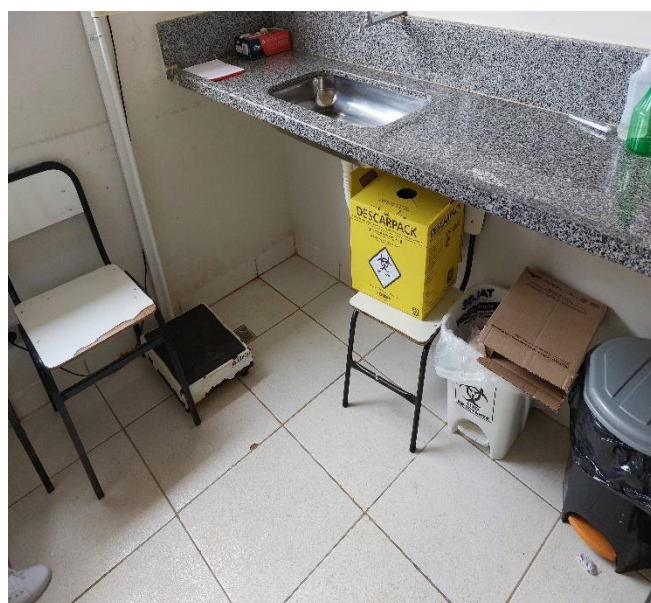
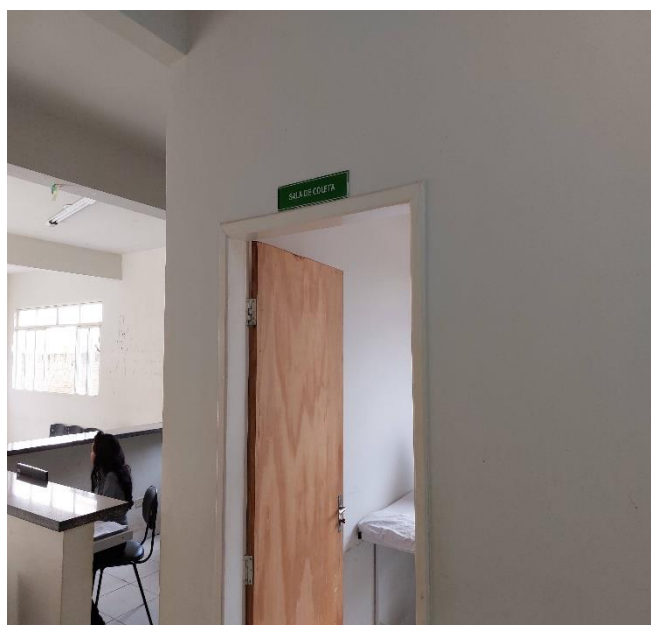
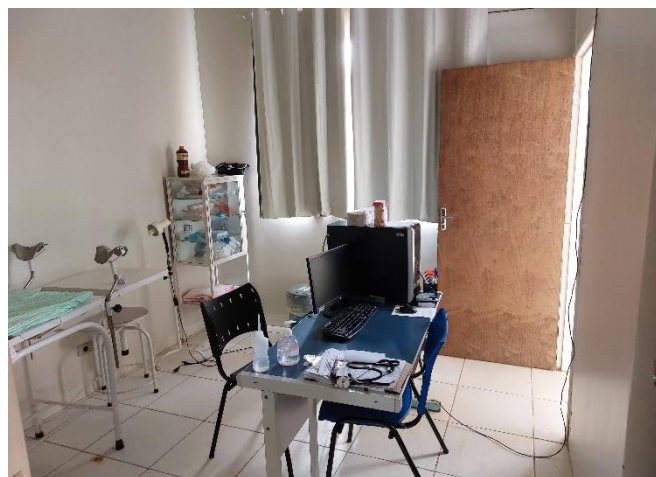
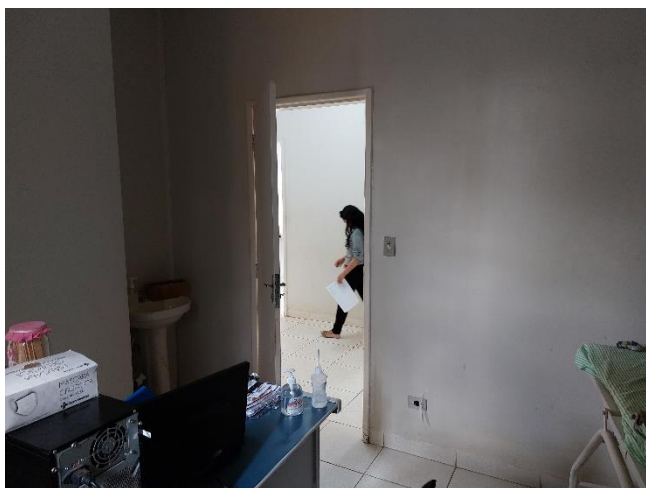


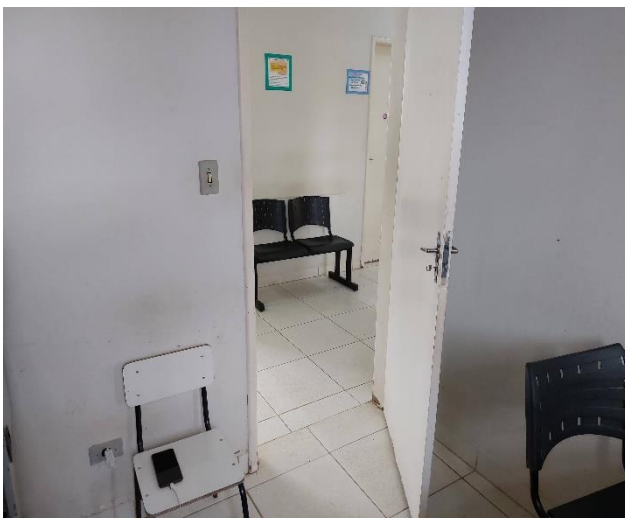
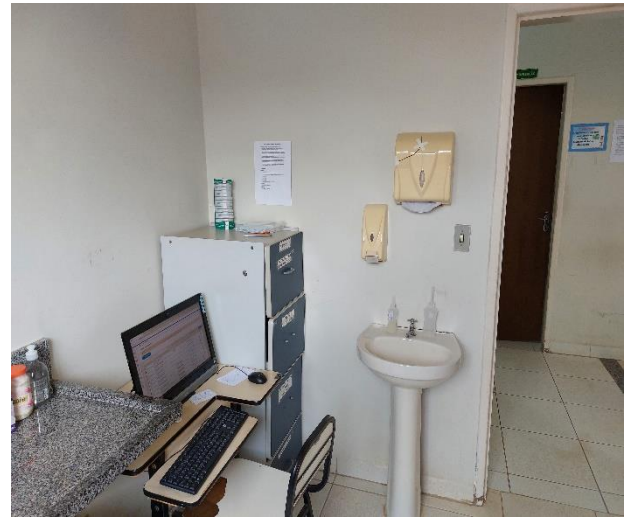
RELATORIO FOTOGRAFICO

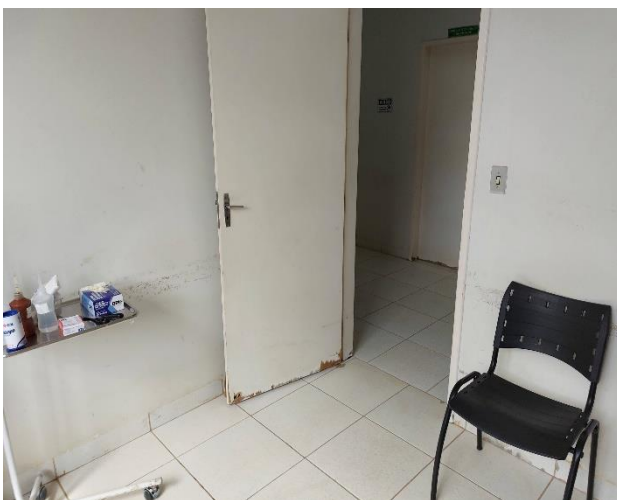
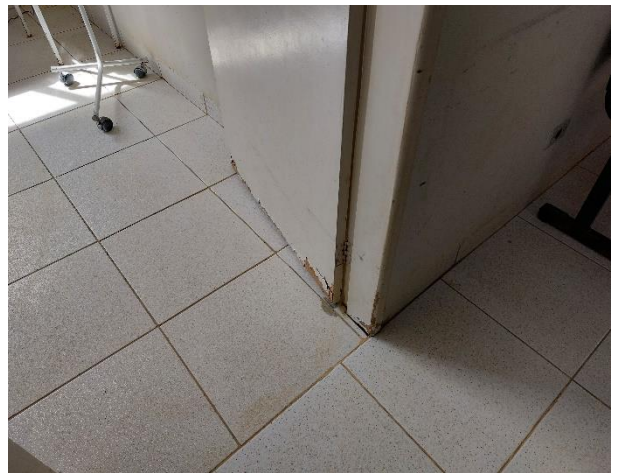
OBRA: MANUTENÇÃO/REPARAÇÃO DO PSF TABOLEIRO ALTO

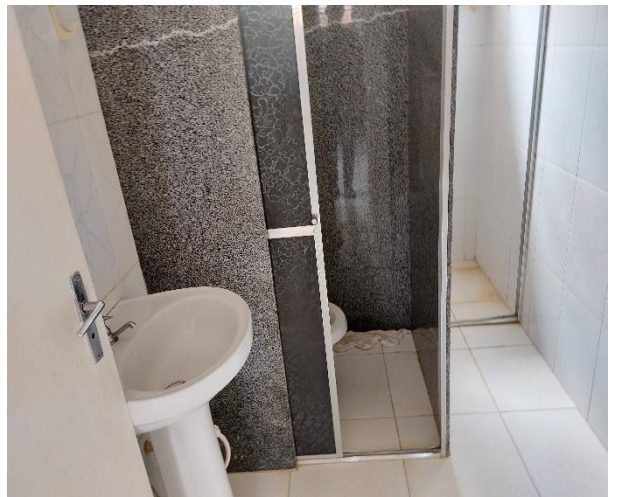
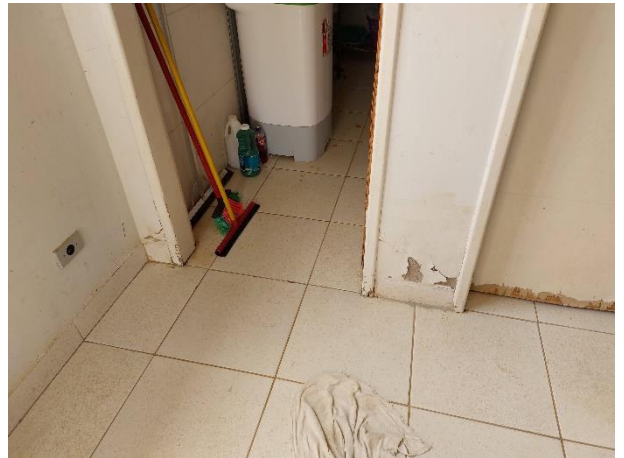
ENDEREÇO: RUA MATO GROSSO, S/N, MORADA DO SOL

MUNICÍPIO: SÃO JOÃO DO PARAÍSO/MG.









FOTOS INTERNAS DO PSF TABOLEIRO ALTO, PARA IDENTIFICAÇÃO DE REPAROS A SEREM FEITOS.



PREFEITURA MUNICIPAL DE SÃO JOÃO DO PARAÍSO
CNPJ/MF 24.791.154/0001-07
END. PRAÇA ARTUR TRANCOSO, 08
CENTRO – CEP.: 39.540-000
Fone/Fax: (38) 3832-1135